

**University  
of Basel**

In association with:

Swiss TPH



Swiss Tropical and Public Health Institute  
Schweizerisches Tropen- und Public Health-Institut  
Institut Tropical et de Santé Publique Suisse

**CSRS**  
Centre Suisse de Recherches  
Scientifiques en Côte d'Ivoire



# **Wet versus supermarket**



















# Codex alimentarius commission framework

**Risk assessment**

**Risk management**

**Risk communication**

# Risk analysis framework of the World Health Organization



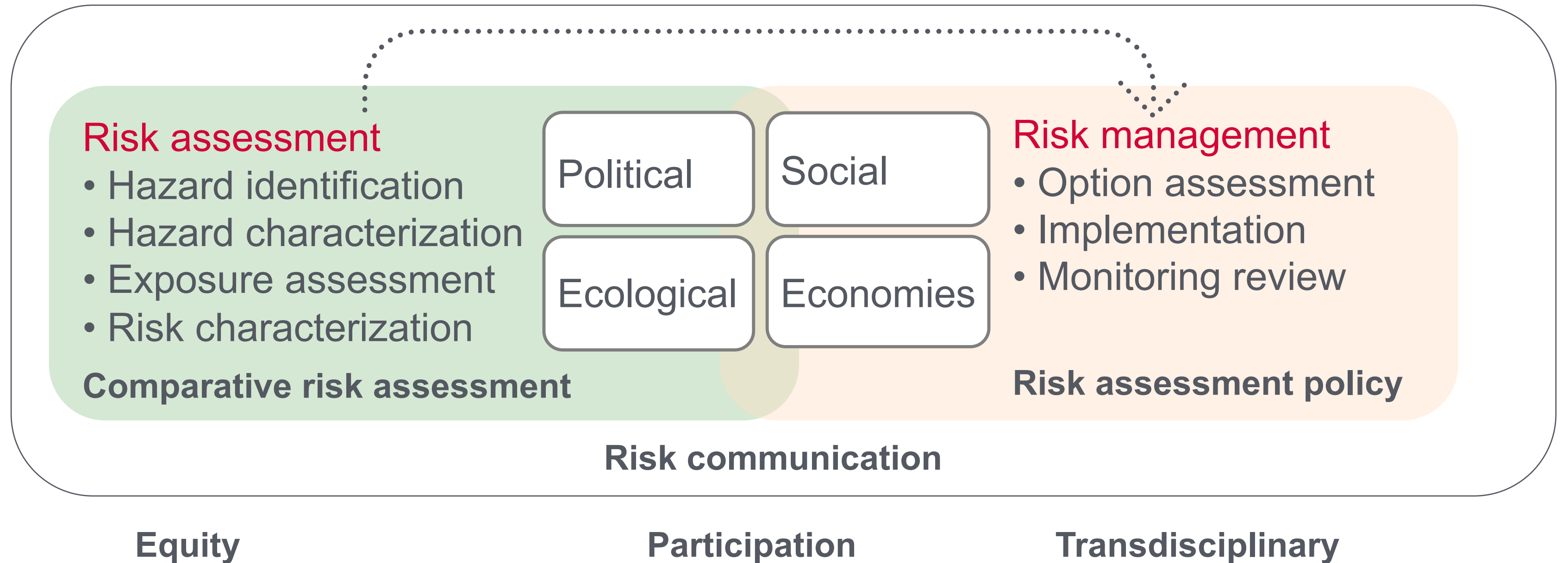








# Cost-benefit and cost-effectiveness analysis





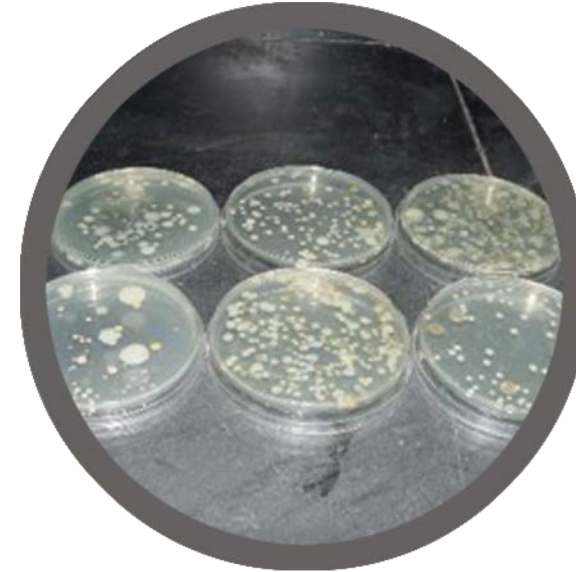
30%



75%



25%



$>10^7$  ufc/ml



6,4%

<b>Parameters</b>	<b>2005</b>	<b>2015</b>	<b>Units</b>
Total milk collected	1'500	7'000	litre/day
Collecting sites	1	17	sites
Livestock owners membership	35	776	households
Animal supplemented feed	50	1'000	tons
Selling points	1	53	sites
Employement created	50	2'000	people
Gross revenue	50'000	1'760'000	euros